

Message not displaying properly? Try the [web version](#).



UNIVERSITY OF CALGARY
SCHOOL OF ARCHITECTURE, PLANNING AND LANDSCAPE

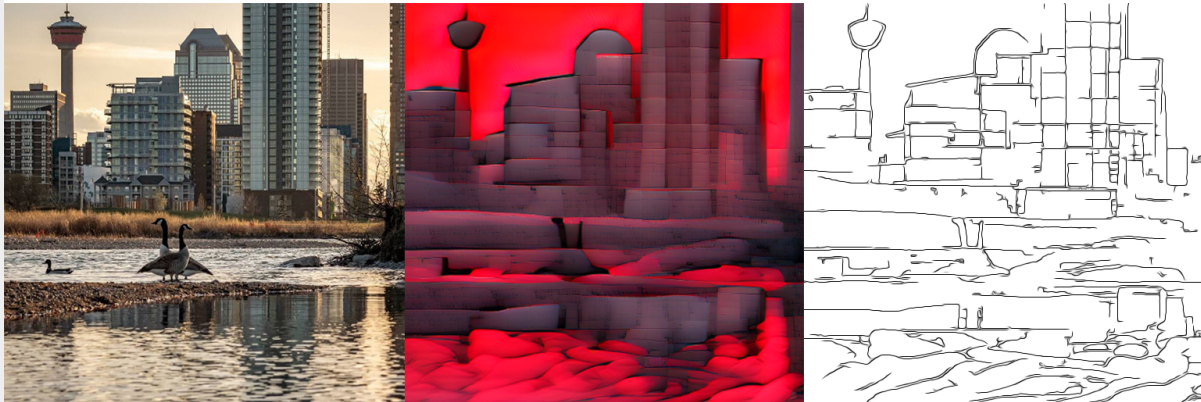
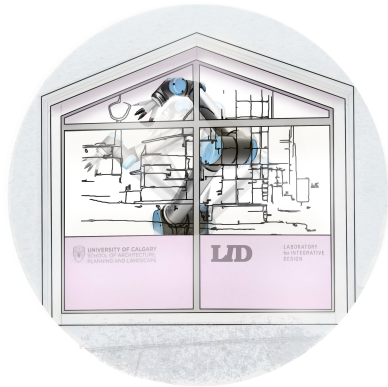


Image: Courtesy LID Lab, showing (from left to right) HUMAN Perspective, AI Perspective, ROBOT Perspective

#MEDIATEDDRAWINGS



On July 12, SAPL's Laboratory for Integrative Design (LID Lab) launches a week-long research exhibition **#MediatedDrawings**. Freddie the Robot will execute live drawings in the window near the City Hall C-Train Station from 5-8pm each day. Visit the link below for more details about the exhibition. If you can't see it in person, you can watch Freddie's performances online via [YouTube](#) or on [Instagram](#). Post a selfie using the tags [#MediatedDrawings](#)

OPPORTUNITIES

SAPL TEACHING ASSISTANTSHIPS | JULY 15

Fall 2021 GAT positions have been posted. The number of appointments may change and will depend on **enrolment numbers in the courses**. All applications must be submitted by 8:00am on July 15. Contact [Amy Hoover](#) with any questions.

[Learn More](#)→

SAPL T-SHIRT DESIGN COMPETITION | JULY 15

All students are encouraged to submit designs for the SAPL t-shirt competition. Visit link for more details. Designs must be submitted to saplsa@ucalgary.ca by July 15.

[Learn More](#)→

SAPL STUDENT VIDEO DESIGN COMPETITION | JULY 25

Students with video editing and production experience are invited to submit videos

to our design competition. Visit the link to learn more about submission details.

Entries must be submitted by July 25 to events@sapl.ualgary.ca.

[Learn More→](#)

SAPL STUDENT SEEKING PARTICIPANTS FOR NATURAL PLAYGROUND RESEARCH (CHILDREN + GUARDIANS)

PhD Candidate Miho Lowan-Trudeau is recruiting participants for her doctoral research about experiences with natural playgrounds. Visit the link for more details and [contact](#) Miho Lowan-Trudeau with any questions.

[Learn More→](#)

KINGSLAND COMMUNITY MURALS

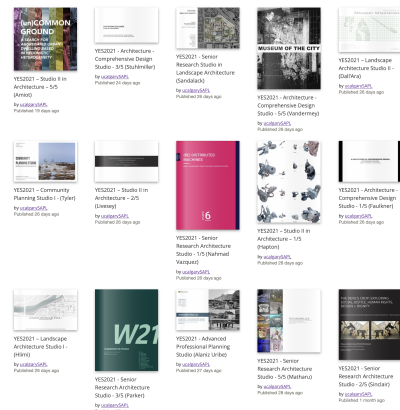
CALL FOR SUBMISSIONS | KINGSLAND MURALS | JULY 22

The Kingsland Community Association is looking for 6-8 artists to create small (lighthearted and fun) murals (4x7 ft) in their newly revived space at the SE corner of Elbow Drive and Glenmore Trail. Painting will begin the first week of August.

The artwork should reflect connection and service and convey an uplifting and fun feeling to express the unique identity of the community. The murals can also play on the idea of feeling royal and treating others royally (playing off the name 'Kings'-land). Kingsland Community is open and welcoming, trying to make connections within and beyond. They see themselves as a special community that offers a lot to the other communities around them.

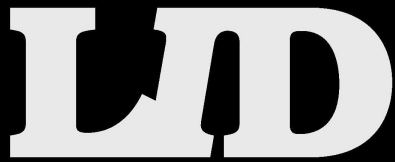
Time is not compensated but artists may keep all supplies used in creating the murals. To submit a proposal, email [Beatriz Martins](#) a sketch/draft of artwork, a brief description of its concept and a list of materials needed.

YES 2021



Have you seen the work being produced by students in different years or programs? The Year End Show (YES) 2021 can be viewed online. It's a great cross-section of studio work from the Winter Term.

[View the Exhibition→](#)



LABORATORY
for INTEGRATIVE
DESIGN

sapl.ucalgary.ca

This message was sent to because you are listed as subscribed to receive email communications from School of Architecture, Planning and Landscape at the University of Calgary.

Don't want to receive this email? No problem. To unsubscribe from future messages like this, [click here](#).



University of Calgary
2500 University Drive NW
Calgary, AB T2N 1N4
CANADA

© University of Calgary 2023
[Privacy Policy](#)